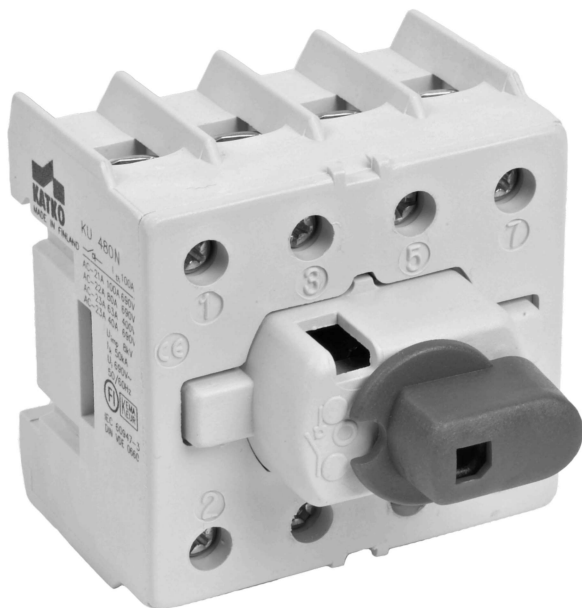


# KU 440N

## KU Rotary switches and change-over switches 16-125A



Data subject to change without notice. Always confirm the data is correct from the seller.

- Compact size
- VV = change-over switch
- DIN-rail mounting
- 3-pole and 4-pole KU-switches as standard
- 2-pole upon request
- 6-pole and 8-pole versions consist of two 3-pole or 4-pole KU-switches connected by a parallel kit
- Switch technology by means of silver contacts ensures safe and durable operation
- Compatible with handles LK10 and LK11 (load break switches) and LK12 (change-over switches)
- Shafts L=100/200/300 AD11 and L=100/200/300 AD11/VT (load break switches) and L=100/200/300 AD12/VT (change-over switches)
- Tested according to IEC 60947-3
- Available with **CCC certificate**, mention when ordering
- **Note!** Al-cables cannot be connected directly to switch terminals. For Al-cable connection please use a bi-metal cable connector, **available here**.

Technical Data

Accessories

Handle & Shaft



## Product details

|   |                   |
|---|-------------------|
| <b>SKU</b>  | KU 440N           |
| <b>AC-22 400/415 V (A)</b>  | 40 A              |
| <b>AC-22 690 V (A)</b>  | 40 A              |
| <b>AC-23 400/415 V (A/kW)</b>   | 32 A / 15 kW      |
| <b>AC-23 690 V (A/kW)</b>   | 32 A / 30 kW      |
| <b>Cable Area to Switch Terminal (only Cu) (mm<sup>2</sup>) / Bolt size</b> | 1.5-16            |
| <b>E-Number</b>   | 3635102           |
| <b>EAN</b>  | 6419410215500     |
| <b>Number of Poles</b>  | 4                 |
| <b>Operation</b>  | Rotary            |
| <b>Switch type</b>  | Load Break Switch |
| <b>Weight (kg)</b>  | 0.23              |

## Dimensional drawing

